

# EMU'S RUN ROGAINE

WESTERN AUSTRALIAN  
ROGAINING ASSOCIATION  
SPRING 12 HOUR ROGAINE  
1st NOVEMBER 2014



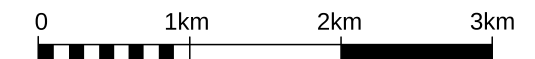
## SETTERS/VETTERS:-

PAM BRADLEY  
OLD MAN EMU

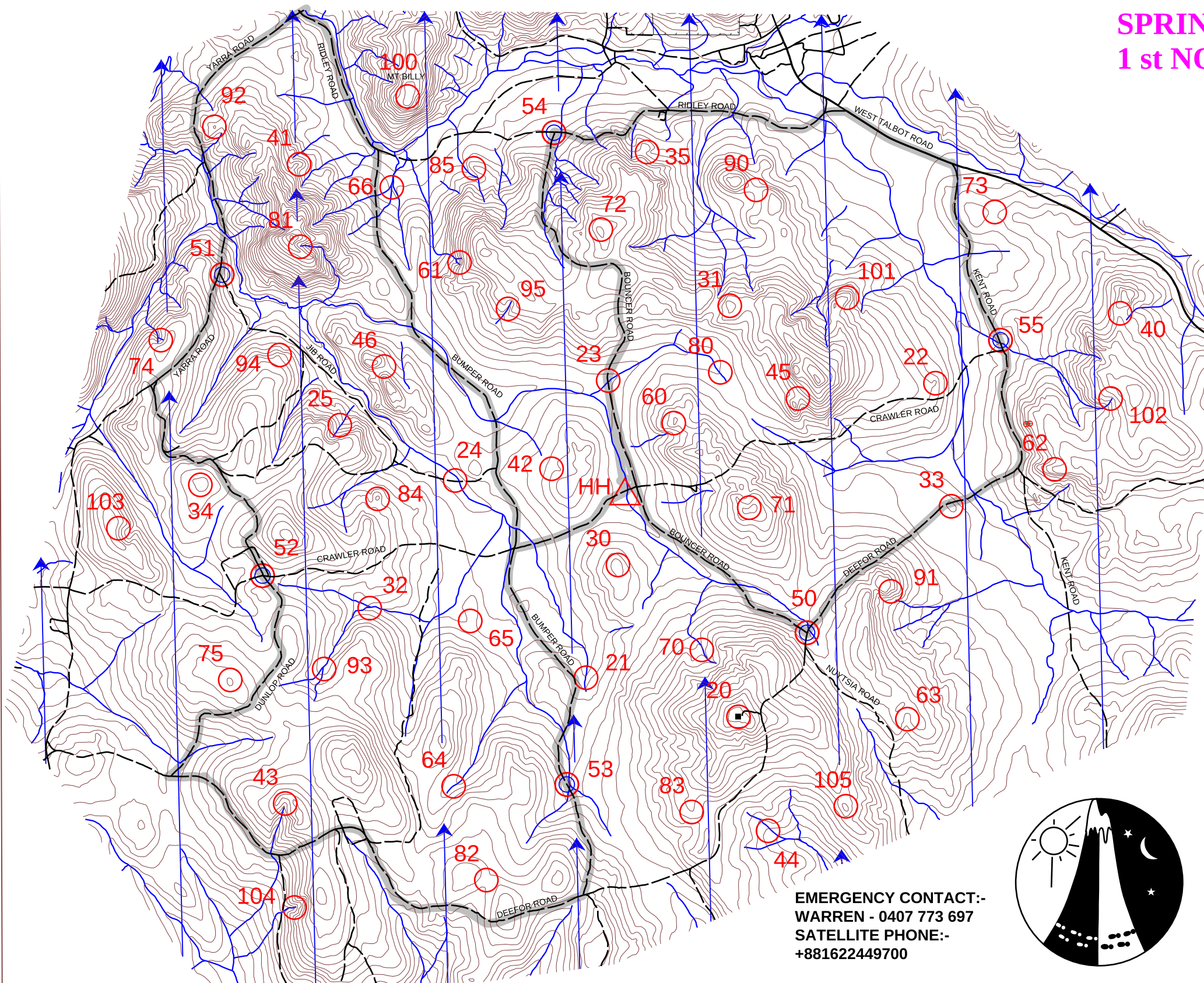
STAN BARCLAY  
DAVE HARTLEY

## LEGEND

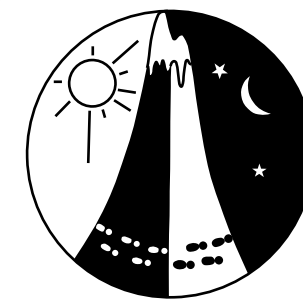
SCALE 1:50,000, 5 metre contour interval



- Building
- Control
- Contours
- Hash House
- Magnetic North Line
- Out of Bounds
- Patrolled Road
- Pipeline
- Railway, Abandoned
- Road, Bitumen
- Road, Major Gravel
- Road, Minor Gravel
- Watercourse
- Water Drop



**EMERGENCY CONTACT:-**  
WARREN - 0407 773 697  
**SATELLITE PHONE:-**  
+881622449700



This map was produced using OCAD 9 by the Western Australian Rogaining Association, wa.rogaing.asn.au. Data supplied by Landgate and used under copy licence 393/93. Possession of this map does not give right of entry to this area.

<b>Comp No</b>	<b>Control Description</b>
20	A Compound – Western Corner
21	The Watercourse
22	The Spur
23	The Watercourse/Track Junction
24	The Watercourse/Track Junction
25	A Watercourse Junction
30	The Summit – Broad
31	The Knoll
32	A Watercourse Junction
33	The Summit
34	The Summit – Broad
35	The Gully – Head of
40	The Saddle
41	A Knoll
42	The Gully – Broad
43	The Watercourse – Head Of
44	The Watercourse – Broad
45	The Saddle
46	The Saddle
50	The Road Junction (Water)
51	The Track Junction – 25 metres at 120 degrees (Water)
52	The Road Junction – 50 metres 180 degrees (Water)
53	The Watercourse/Track Junction (Water)
54	The Road Junction – Water)
55	The Watercourse/Track Junction (Water)
60	The Knoll – Rocky
61	The Southern Watercourse – Head Of
62	The Spur
63	The Gully – Head of
64	The Watercourse
65	The Saddle
66	The Watercourse Junction
70	A Watercourse Bend
71	The Summit
72	The Knoll
73	The Saddle
74	Northern Watercourse – Head of
75	The Summit
<b>Comp No</b>	<b>Control Description</b>
80	The Watercourse – Broad
81	The Watercourse – Head Of
82	The Saddle
83	The Spur – Broad
84	The Knoll – Rocky
85	The Spur
90	The Saddle
91	A Gully
92	The Knoll
93	The Watercourse Junction
94	The Spur – Broad
95	The Watercourse
100	The Summit – Rocky (Mt Billy)
101	The Spur
102	The Watercourse – Head Of
103	The Gully – Head of (Northern)
104	A Watercourse Junction
105	The Knoll